

Hydraulic Hammer



TECHNICAL SPECIFICATIONS

Model	E-106	GH-06	GH-07	PH-1	PH-2	PH-3
Excavator weight (t)	0.7 - 1.0	1.2 - 2.0	1.5 - 3.0	2.0 - 3.5	3.0 - 5.5	4.0 - 9.0
Operating weight* (kg)	62	127	138	191	229	353
Total length (mm)	872	1037	1088	1154	1240	1395
Oil flow (l/min)	15 - 20	10 - 25	15 - 35	25 - 55	25 - 60	45 - 100
Blow frequency (bpm)	900 - 1200	480 - 1200	500 - 1200	550 - 1100	500 - 1200	500 - 1150
Min. excavator pressure (MPa)	15 ~	17.5 ~	17.5 ~	21 ~	21 ~	21 ~
Chisel diameter (mm)	41	42	47	57	66	76

Model	PH-4	GH-6	GH-7A	GH-9	GH-10
Excavator weight (t)	6 - 12	12 - 18	14 - 21	17 - 24	21 - 28
Operating weight* (kg)	527	913	1345	1607	1816
Total length (mm)	1570	1931	2235	2356	2535
Oil flow (l/min)	50 - 120	90 - 150	100 - 180	150 - 200	165 - 210
Blow frequency (bpm)	400 - 1000	460 - 800	400 - 750	500 - 650	430 - 550
Min. excavator pressure (MPa)	21 ~	21 ~	21 ~	21 ~	21 ~
Chisel diameter (mm)	86	106	116	126	136

Model	GH-12	GH-15	GH-18	GH-23	GH-30	GH-40
Excavator weight (t)	24 - 38	28 - 45	38 - 50	50 - 60	50 - 80	90 - 110
Operating weight* (kg)	2310	2843	3292	4525	5450	7750
Total length (mm)	2738	2933	3056	3320	3552	3867
Oil flow (l/min)	170 - 220	200 - 250	220 - 290	250 - 320	280 - 350	300 - 400
Blow frequency (bpm)	400 - 520	350 - 450	300 - 400	300 - 400	310 - 390	240 - 330
Min. excavator pressure (MPa)	21 ~	21 ~	21 ~	21 ~	21 ~	21 ~
Chisel diameter (mm)	146	156	165	174	184	204

*Operating weight including standard top bracket

Technical specifications subject to change without prior notice

HYDRAULIC HAMMERS



SHEET PILERS



STEEL SHEARS



X-Y-Z CONCEPT



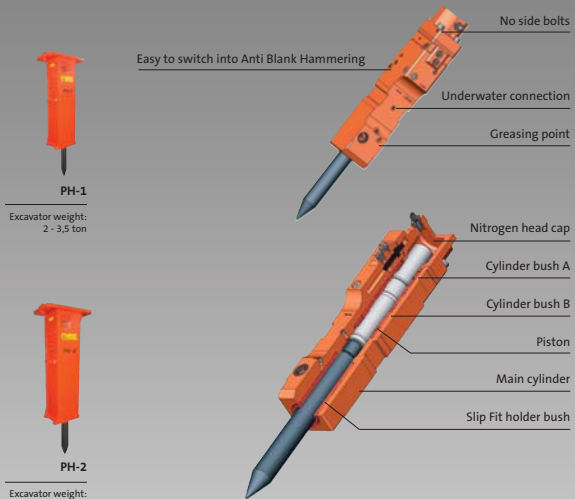
COMPACTORS



Dealer:

NPK Europe (Holland) BV
 P. O. Box 30157
 3001 DD Rotterdam
 The Netherlands
 Tel: +31 10 205 1710
 Fax: +31 10 205 1715
 E-mail: info@npke.nl

THE NEXT GENERATION HYDRAULIC HAMMERS: PH-SERIES (4 models)



ADVANTAGES

- Easier maintenance.
- New valve system.
- Slip Fit holder bush.
- Bigger retainer pin.
- Chisel same as GH-series.
- Better balance with excavator.
- Easy to switch to Anti Blank Hammering.
- Lower weight.
- Lower gas pressure (only 1,2 MPa).
- No side bolts.
- Carburized cylinder.
- Less parts.

HYDRAULIC HAMMERS: GH-SERIES (12 models)



Unique gas charged piston action. The Power of NPK

Nitrogen gas: less recoil, more power

Main valve: only two moving parts

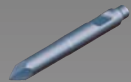
Piston: constant energy per blow

Rapid chisel replacement

Genuine NPK Chisel

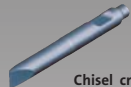
ADVANTAGES

- New range of brackets which encloses the hammer in the best possible way: reduces sound and vibration.
- All models adaptable to underwater operation.
- Shock absorbing rubber cushions (from GH-7A) absorbs vibration and protects integrity of excavator boom and arm.
- Designed with sealed gas (N₂) chamber – no rubber bladder accumulators.
- Constant energy per blow: Maintains high breakout force – not dependent upon blow rate.
- Rapid and easy chisel replacement: reduces downtime to a minimum.
- Replaceable tool bushings prevent wear to main chisel holder body and enhances the life of the breaker.
- Designed with automatic lubrication channeling which allows installation of lubrication system.
- Replaceable cylinder bushings to prevent wear of the hammer body. Easy to overhaul.



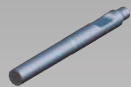
Chisel (P)

Concrete breaking
Highway construction
General demolition



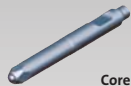
Chisel crosscut (FX)

Trenching
Cutting casting gates
Breaking oversize
General demolition



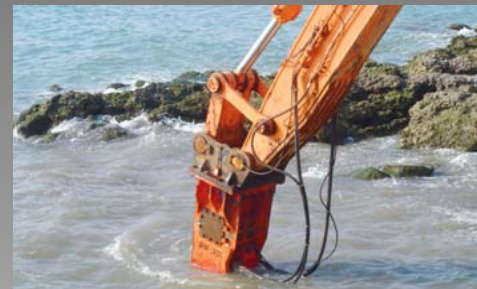
Chisel (E)

Secondary breaking
Breaking oversize
Slag removal

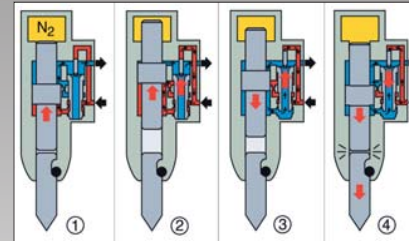


Core Chisel (PC)

The Core Chisel with its revolutionary steel core, provides extra hardness where it is required: at the point of impact. The benefit being less wear, increased productivity and lower replacements costs!



WORKING PRINCIPLE



SHOCK ABSORBING CUSHION RUBBERS (FROM GH-7A): LOW VIBRATION AND LOW NOISE

The shock absorbing mounting brackets, utilize special heavy-duty rubber mounts to absorb shock, recoil and impulse vibration. This unique NPK feature minimizes machine wear and improves operator comfort for greater reliability and productivity.

